

# Arden Club Calendar

www.ArdenClub.org

October 2009

---

## DINNER GILD

---

### Dinner Gild Season Starts

**The First Dinner is Here!** Our experienced crew of more than 30 years is cooking their Chateaubriand feast on October 3! Other crews will cook wonderful meals nearly every Saturday through June 5, 2010. Bring wine if you like (over 21 only, please) glasses available. Please specify vegetarian alternative or take-out when calling in dinner reservations. For reservations please call 792-7139 by 6:00 p.m. Thursdays. Please note: no-shows will be billed. We are keeping the same low price as last year: Arden Club members \$9, nonmembers \$11 and children \$5.

**Murder with Dinner:** Start the season off on Saturday, October 3 with dinner and a play. Enjoy our Chateaubriand dinner with special seating upstairs followed by the Bootless Artworks murder mystery, *Knock 'Em Dead*. The Dinner Show package costs \$25 per person and includes full dinner, choice of dessert, one complimentary drink served tableside by our friendly wait staff, silent auctions & raffles, and the play, with a chance to decide the ending! (Show details are on page 4.) Reservations are required. Please call 302 475-3126 x4.

**The Dinner Gild enjoys working with other Gilds.** If your theatre, concert or other gild event needs food - let us know. We're looking forward to a great 2009-2010 season of community dinners with friends, family and neighbors again.

*Continued on next page.*

#### Upcoming menus and chefs: Saturdays unless noted otherwise

**Oct. 3** – Ardencroft Crew – The legendary and delicious Chateaubriand feast returns with an interactive show by Bootless Artworks in the Upper Gild Hall – get your fund-raiser tickets early and enjoy dinner.

**Oct. 10** – Seth Baker and Friends – Portabella Mushroom Napoleon, zesty carrots, roasted potatoes, pumpkin ice cream with spiced wafer for dessert.

**Oct. 17** – Laura Wallace and Friends – Chicken with salsa and limes, roasted brussel sprouts and carrots, rice and a delicious dessert.

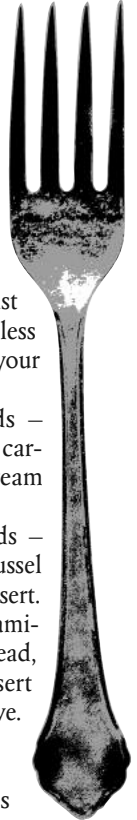
**Oct. 24** – Robinson and Bischoff Families – Spaghetti and meatballs, garlic bread, cesar salad, something yummy for dessert and a spinach lasagna vegetarian alternative.

**Sunday, Oct. 25** – ACRA Halloween Party – we will provide hamburgers, hot dogs and veggie burgers. (Details are on page 12.)

**Oct. 31** – Halloween – No Dinner. Enjoy your trick-or-treating and partying.

**Sunday, Nov. 1** – Omelet Brunch – Wake up after a fun night of spooks and goblins and come for your favorite “make it your own” omelet brunch from 10:00 a.m. to 2:00 p.m. No reservations required.

**Nov. 7** – Cindy Cohen, Family and Friends – Pumpkin mushroom soup, mustard encrusted pork roast, broccoli, roasted potatoes and gingerbread pudding cake with ice cream.



# Upcoming Dances

## Wednesdays, 7:30 - 9:30 pm, \$4, \$5

- Oct. 7 - Israeli dancing with Sharon Kleban
- Oct. 14 - Folk dancing Liz Dubravcic & square dancing Dave Brown
- Oct. 21 - Folk dancing with Jenny Brown
- Oct. 28 - Israeli dancing with Sharon Kleban

## SUNDAYS

**1:30-2:00pm Dance lesson**

**2:00-5:00pm Contra dance, \$8, \$9**

- Oct. 4 - Contra Dance RUMPUS (band) with caller Ridge Kennedy
- Nov. 1 - Sun. Contra Dance Jane's Gang (band) ! caller Shane Knudsen !

For more information call  
302 478-7257 or  
610 277-0844.

Website: [www.ardenclub.org](http://www.ardenclub.org)



---

## DINNER GILD *continued from Page 1*

---

**Permanent Reservations** must be requested. There will be no carry-over from last year. To have your name on the Permanent Reservation List for the dinner season, please call the reservation phone line; 792-7139.

**Who to call?** Reservations / cancellations; 792-7139. Gildmaster; Edmond Bischoff, 475-8253. Scheduler; Laura Wallace, 743-5939. Other questions; Amy Pollock, 529-1261 or 598-9186. Also, dinners are listed on the Club website.

**Welcome to our Newest Dinner Gild Members:** Nancy Clay, and Chuck and Madeline Dobbs. Nancy already made desserts for us and looks forward to more Dessert Crew action. Madeline and Chuck are eager to get to work with us.

Speaking of **Specialty Crews**, our Coordinator, Denise Nordheimer, 475-1832, says we still have openings on our Dessert and Vegetarian crew's. Call her for another opportunity to join us!

**Gift Certificates** for this year are available through Denise too. They make great holiday, thank you and special occasion gifts. It's still just \$9.00 per Gift Certificate. The Gift Certificates must be used in the season purchased.

**Our Education Event** was Sunday, September 13th at 2:00p.m. We had a nice gathering with a great exchange of information between cooks and dinner gild members for the coming season. Food and fun were plentiful.

**Donations** can be made anytime: we are a 501(c)3 nonprofit corporation. Receipts are available for your tax deductions. Thank you for your donations and assistance to keep the Dinner Gild, Arden Club and Gild Hall going. Sorry, but the cost of dinners is not tax-deductible.

**Our next Dinner Gild meeting** is on Monday, October 5, 2009, 7:00p.m. in the Lower Gild Hall. Join us!

# New! Georgist Land Rants!

## Land Rent:

### What is it Good For?

Come and learn about Henry George's economic rent, and how it applies to us today. Discuss issues concerning taxes for cable use, citizen dividends from income derived from cell antennas, issues related to vacant homes, how all residents of The Ardens benefit from our land value tax.

**Tuesday, October 13, 7:30 at the Buzz Ware Village Center.**

Refreshments will be served

And mark your calendar for our next Land Rant: Thursday, November 12.



## Meetings and Programs

The Georgist Gild meets on the second Tuesday of each month with a 15-minute business meeting at 7:15 p.m. followed by a program at 7:30 p.m. Our current programs of Land Rants are an excellent way to learn about the economic philosophy of Henry George. We also encourage you to read his books and attend our special 10-week course. Also, much information, developed by Bob DeNigris, can be found on the Arden Club website: [www.ardenclub.org](http://www.ardenclub.org).

## Questions?

Please call Sadie at 475-1745.

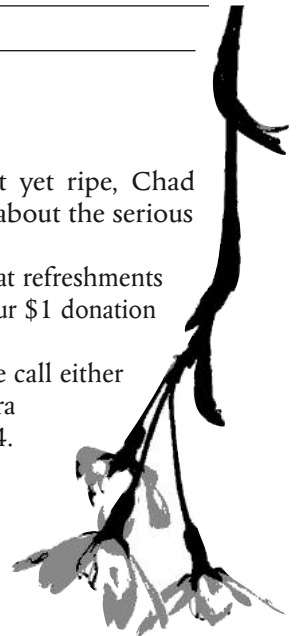
# Edible Landscape Plants

The Gardener's Gild will meet on Monday, October 19, 2009, at 7:30 p.m., in the Lower Gild Hall. We are pleased to welcome to our meeting Chad Nelson, Assistant Professor of Landscape Design at the University of Delaware, who will speak about Edible Plants in the Landscape. Aside from the ornamental qualities of plants in the landscape, many trees and shrubs can be incorporated to provide a combination of beauty and nutrition for both people and animals. Conditions permitting, Chad will bring samples of landscape edibles, hopefully including the native persimmon. With luck, we will have a chance to taste a local sample while it is ripe and fresh – and if

the persimmons aren't yet ripe, Chad promises to warn you about the serious risk of cotton-mouth!

Please remember that refreshments are served, and bring your \$1 donation for the Gild.

For questions, please call either Maura Lynch, or Barbara Conway, at 529-9464.



# Knock 'Em Dead

## DINNER AND A PLAY OR JUST THE PLAY!

Bootless Artworks is happy to work with the Dinner Guild to kick-off the season and our fundraising efforts. Audience members fully participate in the show by assisting with sound cues, questioning the suspects, even voting on how the play will end. One lucky stiff gets to play the "Dead Guy"!

**October 3, 2009 Arden Gild Hall**  
**Dinner Seating begins at 5:15 pm**  
**Dinner Served @ 6:00 pm**

Reservations Required for Dinner Package  
Call 302 475-3126 x4  
Dinner Show Package - \$25 per person  
Chateaubriand Dinner, Choice of Dessert and Complimentary Drink  
**Show Only @ 7:30 pm**  
\$10 General Admission



# Evil Dead: The Musical



**October 30 & 31 at 8:00pm**  
**November 6 & 7 at 8:00pm**  
**Special Show - October 31 @ 11:30pm**

Stage Director - Jim Gaspero  
Music Director - James Fuerst

Sam Raimi's classic cult movie turned musical. Several college students spend the weekend in an abandoned cabin in the woods, accidentally unleashing an evil terror. In this comedic tale, characters and demons sing and dance to songs written for the musical. And, as in the films, our hero, Ash Williams, dishes out various one liners and fights the never-ending Army of Darkness. A true bloody good time. Not recommended for under 14.

### Tickets On Sale Now

\$20 Splatter Zone Reserved Seating  
\$18 Adult / \$15 Senior & Student

Call the box office (302.475.3126 x 4) or visit [www.bootless.org](http://www.bootless.org) for further information or to purchase tickets online.

# Jerry Douglas

Friday, October 9, 8:00 p.m.  
\$35 (\$29 members)

*Tickets already issued for the May date will be honored.*



It's tempting to summarize dobro master Jerry Douglas's musical impact with numbers — his 12 Grammy Awards, 11 Musician of the Year awards from the Academy of Country Music (and three more from the Country Music Association), eight instrumentalist awards from the International Bluegrass Music Association, and over 2,000 instrumental appearances on records by such artists as Paul Simon, Ray Charles, The Chieftains, Elvis Costello and Reba McEntire.

The leader of Alison Krauss and Union Station featuring Jerry Douglas (the band name is often abbreviated as AKUS) offers a pithier description: "He's irreplaceable," Ms. Krauss tells us.

This unprecedented concert event is sure to sell out quickly. Tickets are \$29 for club members, \$35 for guests. They are available by calling 302 475-3126 or for non-members online and at Between Books in Claymont.

# BeauSoleil avec Michael Doucet

Thursday October 15, 8:00 p.m.  
\$33 (members \$27)



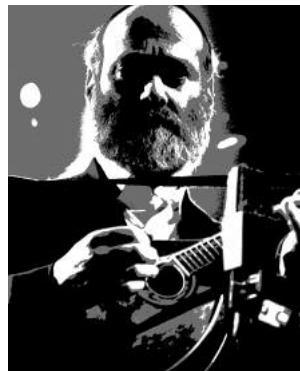
Since forming in 1975, Grammy winners BeauSoleil have claimed their undisputed role as the most esteemed Cajun group in music. BeauSoleil avec Michael Doucet take the rich Cajun traditions of Louisiana and artfully blend elements of zydeco, New Orleans jazz, Tex-Mex, country, blues and more into a satisfying musical recipe. From The Grand Ole Opry to Newport Folk, from concert hall to dance floor, the music of BeauSoleil continues to captivate audiences the world over. In keeping with Arden's longstanding folk dancing tradition, the Concert Gild will open up part of the floor for dancing, so "allons danser avec BeauSoleil".

# Andy Statman Trio

Sunday, November 8, 7:00 p.m.  
\$20 (\$17 members)

Andy Statman's virtuosity is legendary and his versatility is stunning. His music is a unique and often unpredictable amalgam of bluegrass and American roots, avant-garde, jazz, Jewish, klezmer and hassidic sources. His recent release, *East Flatbush Blues*, was nominated for a Best

Country Music Instrumental Grammy Award. Andy has collaborated with renowned musicians such as Jerry Garcia and Itzhak Perlman. He was last seen in the area touring with Bela Fleck and the Flecktones.



# Oh What a Wonderful Day!

*by Sima Krusheski, Chair, 102nd Arden Fair*

We had great weather for the Arden Fair, and everyone who came looked like they left loaded down with bags of goodies they found. I saw smiles everywhere. I heard we even had visitors from Europe. Our new construction crew this year came through with flying colors - we were done before sunset on Friday. The new banners and signage, courtesy of our Banner and Sign committees, were not only functional but beautiful. The performers were exhilarating. We had a lot of new captains on our team who did amazing jobs in this their "initiation" year. We can always use helpers, so this year we created a call system to introduce all Arden Club members, by asking them and theirs to volunteer, to what goes into making the Fair. If you got a call from us and this was your first time volunteering, "thank you". I hope you had a great experience and want to do it again next year! I recruited Danny Schweers into taking pictures of the booth set up, so take a look at the Arden Club website to see if you're in one of the photos.

Thanks again to everyone who participated in this amazing and successful Fair. Hope to see you next year.

At this point, I'd like to publish a partial list of volunteers who helped create the Fair. The rest of the list will be included in the next issue. The full list will be available soon as a link on our website, [www.ardenclub.org](http://www.ardenclub.org). If after viewing the "full list" you notice that you or someone you know has not been included, please contact Danny Schweers so that we can correct the omission.

Donna Abed • Ran Abed • Gloria Allen • Jeannine Altoe • Karen Ames • Cheryl Anderson • Barbara Baker • Dave Baker • Seth Baker\* • David Banker • Kathy Banker • Linda Barclay • Bev Barnett • Micki Barone • Ruth Bean • Tinsley Belchter • Mike Berheide • Eric Berry • Richard Biddle • Edmond Bischoff\* • Steven Blades • Dina Bogino • Jennifer Borders • Brooke Bovard • Kyle Bowers • Scott Bowers • Bob Bratton • Debbie Bricker • Liz Broadbent\* • Diane Brocklesby • George Brocklesby\* • Emily Brown • Jenny Brown • Polly Brown • Rachael Brown • Audrey Buffano • Jenny Buffano • Sherry Burke • June Burleigh\* • David Burslem • Terry Burslem • Jordan Butt • Warren Butt • Barbara Byer • David Byer • Rebekah Byer • Alison Byer\* • Carolyn Cardivano • Jim Carey • John Cartier • Linda Celestian\* • Dawn Chang • Robin Chipman • Marianne Cinaglia • Jane Claney • John Claney • Janean Clare • Nancy Clay • Eve Clingman • Bethany Cloutier • Cathy Cloutier • Tommy Cloutier • Sarah Coburn • Ben Cohen • Cindy Cohen\* • Steve Cohen\* • Peter Compo • Phil Conner • Barbara Conway\* • Sandy Cooper • Janet Cosgrove • Felice Cressman • Mike Curtis • Holly Custer • Alton Dahl • Ann D'Amore • Roy Dean • Chris Deephouse • Rosanne Dell Aversano\* • Bob DeNigris • Scott Denning • Mollie Dennis • Cynthia Dewick • John Digiacomma • Chuck Dobbs • Madeline Dobbs • Jack Dolmetsch • Dorinda Dove • Linda Eaton • Linda Ellis • Cecilia Ergueta • Lucy Faella • Gabby Faucett • Kim Faucett • Joanne Ferrara • Tyler Ferraro • Phil Fisher • Rebecca Fisher • Joan Fitzgerald • Beverley Fleming • Carol Forsyth • Hetty Franke • Jane Frelick • Jim Fuerst • Joy Gardiner • Jim Gaspero • David Gerbec • Willard Glenn • Maureen Gordon • Gordon Hess • Annie Gutsche • Michael Gutsche • Oliver Gutsche • Serena Gutsche

• Terri Hansen • Sylvia Helliard • Steve Hendel • Virginia Henry • Amy Hill • Catey Hill • Mike Hinkle • Jennifer Hintlian • Hardy Hoegger • Heidi Hoegger • Rusty Hoegger • Zachary Hoopes • Jocelyn Hoopes • Randy Hoopes\* • Greg Hoopes\* • Megan Horen • Haley Hornung • Barbara Hrudá • Sandy Hulton • Luke Ingman • Ina Jacobs • Barbara Jacobs\* • Rodney Jester • L Johnson • Susan Jonas • Donna Junt • Harold Kalmus • Megan King • Diane Kinnely • June Kleban • Karen Kleban • Sharon Kleban • Shron Kleban • Allan Kleban\* • Evelyn Knotts • Wayne Knotts • Paulina Knotts • Lynda Kolski\* • Michael Kraus • Nancy Kraus • Enno Krebbers • Alan Krusheski\* • Sima Krusheski\* • Sandra Landerl • Carol Larson • Kara Lawrence • Sharon Lawrence • Tanya Lazar • Dick Lebeis\* • Dorsey Lebeis\* • Karl Leck • Brian Leffler • Daniel Lewis • Don Lipstein • Carol Lovett • Herb Lubitz • Joan Lubitz • Yvonne Lyles • Maura Lynch • Ken Mabrey • Barbara Macklem • Pat Maier • Mary Marconi\* • Steven Mausolf • Jim Mc Comsey • Julia McNeil • Jeff Meadows • Adele Meehan • Rebecca Meick • Ron Meick • David Michelson • Jenny Montgomery • Tristan Moosreiner • J Morente • Laurie Morente • Ken Morrison • Pat Morrison • Devin Morrison • R. Mosiley • Lisa Mullinax • Joy Mulholland • Katrina Nelson • Suzi Noonan • Lily Nordheimer • David Nordheimer\* • Susan Oates\* • Irene O'Connor • Sean O'Connor\* • Cookie Ohlson • Mike Opelka • Bea O'Regan • M Orelkas • Emily Ozer • Lily Ozer • Ron Ozer • Caroll Page • Jamie Parker • John Parker • Michael Parks • Ron Pearson • Pamela Pearson\* • Darrell Peery • George Pernicone • Barbara Perry • Shari Phalan • Pat Phillips • Jeff Politis • Stephen Pollock • Bill Pollock • Bob Pollock\* • Amy Pollock\* • Ellen Pollock\* • Dink Pompper • Jackie Poole • Tori Poole • Liz Porter • Karen Portia • Pete Press • Gary Quinton • Marc Rauer • Cheryl Regan • Annie Renzetti • Mosaicne Rey • Amber Riblett • Lisa Riblett • Melanie Riblett • Deb Ricard\* • Clay Ridings • Ray Ritter •

Kim Robbins • Norma Jean Robinson • Stephen Robinson • Shelley Robyn • Mary Rodgers • Helen Rose • Sue Rothrock • Kelly Rouke • Jeff Sanders • Katherine Satinover • Nick Sawyer • Esther Schmerling • Elaine Schmerling • Annie Schmittering • Jessica Schwaber • Jim Schwaber • Joel Schwaber • Dara Schwartz • Danny Schweers • Linda Scott • Lisa Scrbrook • William Shah • Maya Shapiro • Chip Sharkey • Sally Sharp • Peg Shaw • Jeremy Sheiker • Steve Shelley • Linda Sigmun • Christine Simriglia • Oanne Smbrogi • Jean Smolens • Sadie Somerville\* • Tammy Steele\* • Beth Stevenson • John Stevenson • Marie Stevenson • Melissa Stevenson • Bob Stigler • Larry Strange • Savannah Strange • Jane Strobach • Ken Sutton • Becky Sutton\* • Donna Swajeski • Rachel Tanzer • Jacqi Tanzer • Steve Tanzer • Cindy Tanzer • Bill Theis • Debbie Theis • Betty Ann Themal • Alan Threefoot • Barbara Threefoot • Kate Threefoot • Steven Threefoot\* • Christian Toman • Pat Toman • Linda Toman\* • Terry Truono • Sol Tuller • Mary Ann Van Neerdan • Seth Van Neerdan • Jerry Varela • Jocelyn Varela • Dottie Verne • Mary Vernon • Sara Vernon • Josh Vincent • Elyse Vincent\* • Cecilia Vore\* • Larry Walker\* • Laura Wallace • Mary Ruth Warner • J.D. Watson • Michelle Weiner • Jan Westerhouse • Tom Wheeler • Mary Brent Whipple • Eric White • Carol Ann Willcock • Janet Williams • Jon Williams\* • Nancy Wolfe • Ronnie Yaskin • Dave Yoder • Greg Young • Hope Zucker • Diamond State Concert Band • Folk Dancers • Israeli Dancers • Kalai King & the Fractured Hearts • Pete (John DiG's helper) • Phil (John DiG's helper) • Porch Chops • Rubber Skunk with special guest Frankie V. • Scatologists • Strings of Prussia

Eight photographers  
have their images of the Fair on the  
Arden Club website:  
[www.ArdenClub.org](http://www.ArdenClub.org)

# Our 2009-2010 Season Begins

Our Fall 2009 show will be a double-bill of “A G&S Christmas Carol” and “Gift of the Magi”. Performances will be on December 18 & 19. This “Carol” is a lively adaptation of the Charles Dickens classic, “A Christmas Carol”, incorporating many favorite Gilbert & Sullivan tunes, with revised lyrics, while remaining true to the spirit of the original story.

“Gift of the Magi” is a musical version of O. Henry’s classic tale set around the turn of the 20th century. Della and Jim, a poor young couple, sacrifice their most valued possessions in order to provide Christmas gifts for one another, and discover the value of their love! Tickets will go on sale in November.

Auditions for our Spring 2010 show, “Pirettes of Penzance”, are Oct. 1, 4, and 6; however, those auditioning for the Chorus have the option to wait until the first rehearsal in late January (performances are April 23 to May 1). This Robert C. Beavins adaptation of the ever-popular “Pirates of



“Penzance” features a notorious band of women pirates, Major General Stanley and her many (and handsome) wards, the Police Sergeant and her bumbling and timid troops, and many more! For details, see our website, [www.ardensingers.com](http://www.ardensingers.com), or contact John Trexler at (610) 399-6883.

Not ready to perform on stage? If you have a penchant or desire for such things as costume design, painting sets, running props, publicity, etc., or are willing to learn, we welcome your help.

## SWIM GILD

[www.ArdenSwimGild.com](http://www.ArdenSwimGild.com)

# Plan for Summer!

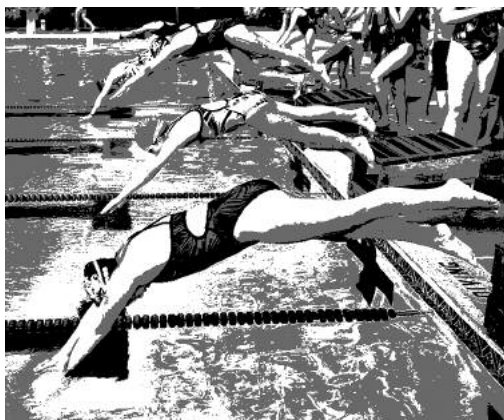
**Annual Swim Gild Meeting**  
**Monday, October 12**

**7:00 p.m. Lower Gild Hall**

Election of 2010 Pool Board.

All members are invited and encouraged to attend.

Please come and bring your ideas for next year. We will be talking about some fund raising concepts. The year-end report will be presented.



Joe Del Tufo

# Spoon River, As You Like It

**Do-it-Yourself Spoon River Anthology**  
**Saturday, Nov. 14, 7:15 pm (or so)**  
**Upstairs in front of the fire**

Join us for a community reading of Edgar Lee Masters' poetic portrait of an American town, much like our own. Published in 1915, *Spoon River Anthology* was a favorite with early Arden settlers. It is a collection of 244 poetic monologues spoken by the deceased residents of a fictional Midwest town. From their graves, the "actors" speak their own epitaphs, "discovering and confessing the real motivations of their lives." *Spoon River Anthology* was adapted for the stage by Charles Aidman and ran on Broadway in 1963. Our *Spoon River* will not be a stage production, but will resemble our own Arden memorial services, where those in attendance are invited to speak from their seats or at the front of the room as they want.

Here's how it works:

1) Find copy of the book or go to any of the online sites, including:

<http://spoonriveranthology.net/>

You may also choose a poem from the *The New Spoon River*, published in 1924.

2) Pick a favorite poem and sign up on the Shakespeare Gild website. (The address is above or you can also get there through [ArdenClub.org](http://ArdenClub.org).) Or



Edgar  
Lee  
Masters

call Cecilia, 475-1976 and tell her which poem you would like to read. You may choose two poems, but time may limit us to one poem each.

3) We will put together an order for our program, and on Nov. 14 all are invited to hear what we've come up with.

Watch for a possible "warm up" reading in October outdoors in the Field Theater. Plans are still being made as the Club Calendar goes to press. If we do have an outdoor reading, it will be announced on the Club website and in the Arden Page.

**As You Like It** has been chosen as our 2010 production, following a suggestion from Gild Hall neighbor B.R. Phillips that we perform the "Arden" play every 10 years. The director will be announced when we have completed our annual "director search" in October.

**Thank you to the many volunteers who worked at Children's Games this year.** From construction to cleanup the Shakespeare Gild was looking strong and able. The goldfish were in good shape and almost all 1000 of them went to new homes. All our "customers" had fun playing the games. Applause for all!

## **Shakespeare Gild officers for 2009-10.**

At our annual "pie bake-off" meeting in September, the Shakespeare Gild elected the following officers: Tom Wheeler, gildmaster; Laura Wallace, assistant gildmaster; Rhys McClure, secretary; Bob DeNigris, business manager; Elaine Hickey and Betty Solway Smith, co-liaisons to the Club Board.

**The Shakespeare Gild meets the first Wednesday of each month** at 7:30 in the Bratten Room of the lower Gild Hall. The business meeting is followed by readings and all are invited to attend. The next meetings are Oct 7 and Nov 4.

---

## ANNUAL EVENTS IN GILD HALL

---

### **Fall Community Garage Sale across from Gild Hall**

**Saturday, October 10, 9:00am to 3:00pm**

If you want a space (only \$8.00), call Naomi at 302 475-2608 to put your name on the list. Sorry, no call-backs. Fee collected that morning.

### **Annual Halloween Party**

**Sunday, October 25, 5:45pm**

Details on back cover.

### **Arden Holiday Shop**

**Sunday, November 29, 11:00am- 4:00pm**

Details below.

### **Christmas Antiques & Collectibles Show Sunday, December 6, 10:00am-5:00pm**

For details, contact Naomi 302 475-2608.

### **Plants Wanted!**

Please donate plants that remain from your Fall garden maintenance to the Gild Hall.

We prefer native plants, but we'll make a home for most anything except invasive plants. Locations that are in need are beds along the path to the pool, around the pool, and the hill above the beer garden. Please contact Carol Larson at 475-6883.

---

## Arden Holiday Shop

---

Arden Club members and residents of The Ardens  
are invited to sell their handcrafted items in Gild Hall.

**Sunday, November 29, 2009, 11:00 a.m. to 4:00 p.m.**

If interested in a table (only \$10 for Club members, \$15 for residents of The Ardens but not Arden Club members—no commissions collected), please make the check out to The Arden Club (a separate check for Arden Club membership if not a resident of the Ardens) and return the information below to 1501 Beech Lane, Ardencroft, DE 19810 by Nov. 1. The Club will provide an 8-foot table unless specified; you provide table cover. The doors of the Gild Hall will be open at 9:00 a.m. for set-up. For more information, contact Dorsey at 302-475-6678.

Name \_\_\_\_\_

Address \_\_\_\_\_ City \_\_\_\_\_ State \_\_\_\_ Zip \_\_\_\_\_

E-mail \_\_\_\_\_ Telephone \_\_\_\_\_

Type of Handmade Merchandise (must be made by you) \_\_\_\_\_

---

# New Books, Old Chimney

## We have goods news and bad news.

The good is we have some great new books:

### Adult Hardback

- Terry Goodkind - *The Law of Nines*
- Philippa Gregory - *The White Queen*
- Dick Francis/Felix Francis - *Even Money*
- Stieg Larsson - *The Girl Who Played With Fire*
- James Patterson - *Alex Cross's Trial*
- Katherine Stockett - *The Help*
- Donald Thomas - *Sherlock Holmes and the King's Evil*

### Adult Paperback

- Charles Finch - *The September Society*
- Charles Todd - *A Pale Horse*

### Junior Fiction

- M.T. Anderson - *Pals in Peril* (Delaware locations)
- M.T. Anderson - *Whales on Stilts*
- M.T. Anderson - *The Clue of the Linoleum Lederhosen*

### Young Adult Fiction

- M.T. Anderson - *The Astonishing Life of Octavian Nothing* (National Book Award Winner)
- M.T. Anderson - *Feed* (National Book Award Finalist)
- M.T. Anderson - *Thirsty*

**The bad news** is that the Gild Hall's tall chimney was struck by lightning in August and a piece crashed through the roof. Rain poured in and damaged \$5,000.00 of books. We have received an insurance payment, but not enough to replace all the books lost. If you would be able to help, contributions can be sent to Barbara Perry, 1606 Sunset Lane, Ardencroft, DE 19810. But in any case, please come in and check out some of our great books!



Tom Wheeler

---

## ARDEN CLUB MEMBERSHIP

---

Reminder: your membership expiration date is on your label! Please renew on time!

**Questions**, call Debbie Ricard, 529-1510. **Address correction**, call Pat and Linda Toman at 475-7508. **For tax-deductible dues payment**, send a check, payable to The Arden Club, to 2126 The Highway, Arden, DE 19810 with this form:

Name \_\_\_\_\_  
Address \_\_\_\_\_  
City \_\_\_\_\_ State \_\_\_\_ Zip \_\_\_\_\_  
Email \_\_\_\_\_

Please "X" appropriate category and make check for that amount.

- |  |      |
|--|------|
| <input type="checkbox"/> Adult (18-64) | \$20 |
| <input type="checkbox"/> Senior (65+)  | \$15 |
| <input type="checkbox"/> Junior (3-17) | \$ 7 |
| <input type="checkbox"/> Family (max)  | \$50 |

# Annual Meeting: November 12

On Thursday, November 12, at 7:30 p.m., all members in good standing are invited to attend the Annual Meeting in Lower Gild Hall. At the meeting, we will elect officers and directors-at-large. Also at that meeting, the board will appoint committee chairs and address other issues.

The Nominating Committee has made the following nominations for officers for one-year terms: President, Steve Cohen; First Vice President, Peter Renzetti; Second Vice President, Elaine Hickey; Secretary, Steve Harcourt; Treasurer, Teri Tremel. Also nominated, to serve as Directors at Large, are: Rosanne Dell Aversano, Alton Dahl, Oliver Gutsche, Pat Toman, Ron Meick, and Rhys McClure.

## Time to renew your membership?

Check your mailing label below. The end date of your Arden Club membership is there. To renew, use the membership form found on the previous page. Questions? Call Debbie Ricard at 302 529-1510.

### **Annual Halloween Party Sunday, October 25**

5:45 p.m. Parade from the Green

6:00-8:00 Party at the Gild Hall

*co-sponsored by ACRA and the Arden Club*

Join your friends and neighbors for Hayrides, Games, Tarot, Craft-Making, Food, Fun, and Spooky Surprises!

Hot dogs, hamburgers, and veggie burgers will be provided. Please bring a salad, an appetizer, or a treat to share.

---

Non-Profit Rate  
US Postage Paid  
Permit #80  
Wilmington, DE

---

Arden Club, Inc.  
2126 The Highway  
Arden, DE 19810  
www.ArdenClub.org